

*Hubble
Bisbee*

CHRISTIE'S
INTERNATIONAL REAL ESTATE

5235 AL JONES DRIVE

BESPOKE WATERFRONT LIVING
COMING SOON TO COLUMBIA BEACH
Proposed New Build by Whitehall Building & Co.



LYNN PEAPER

REALTOR® and Team Lead
Lynnpeaper@thepeapergroup.com
(410) 991-0111 (Mobile)

THE
PEAPER
GROUP

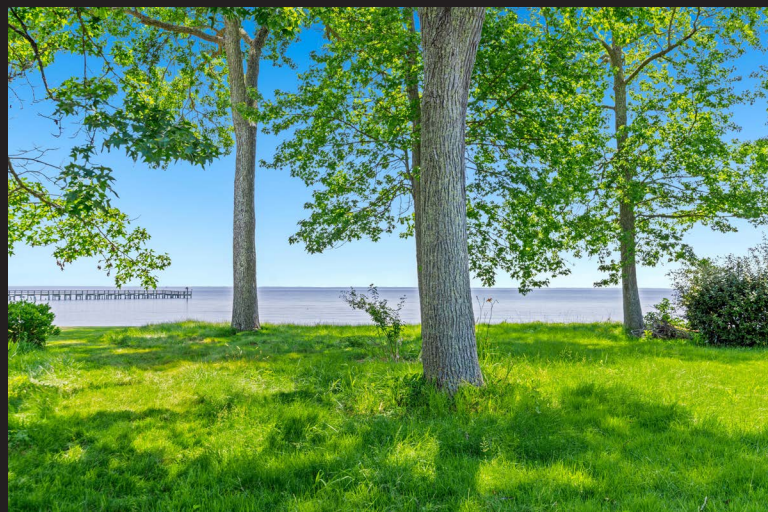
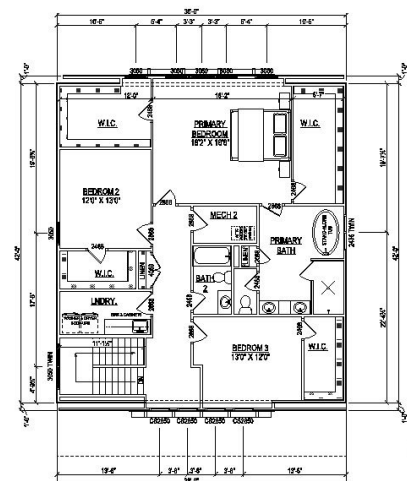
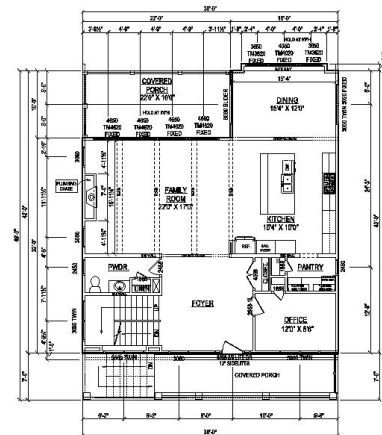
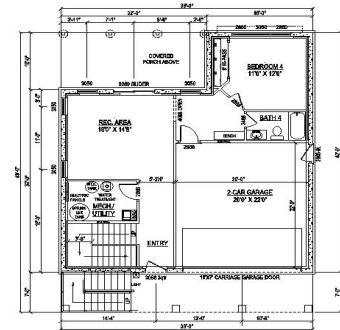
WWW.HUBBLEBISBEE.COM | (410) 321-1833 (OFFICE) | 

5235 Al Jones

Shady Side, MD 20764



The proposed home is by Whitehall Building, a premier waterfront builder in the Annapolis area. With a thoughtful design already crafted, you have the unique opportunity to personalize selections and make modifications, ensuring your home fits your vision.



Preliminary plans – customizable with builder.



DESCRIPTION & SPECS

- 4 Beds | 3/1 Baths | 3,727 Sq Ft | 3 Levels
- Soaring 10' ceilings, open concept
- Walls of glass for panoramic Chesapeake Bay views
- Rip-rapped waterfront with 60' of frontage

- Optional finishes customization
- 2-car garage
- Lot size: 0.15 acres
- Community amenities: Boat launch, pier, courts, playgrounds



Offered at

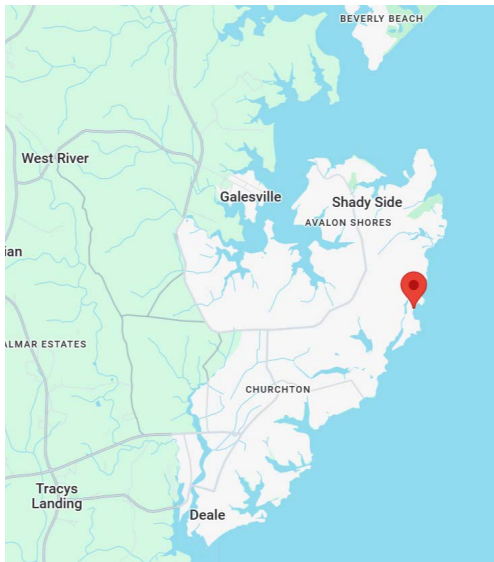
\$1,595,000

THE SETTING

COLUMBIA BEACH HOA

- \$30/month
- Private community pier, tot lots, tennis, boat ramp

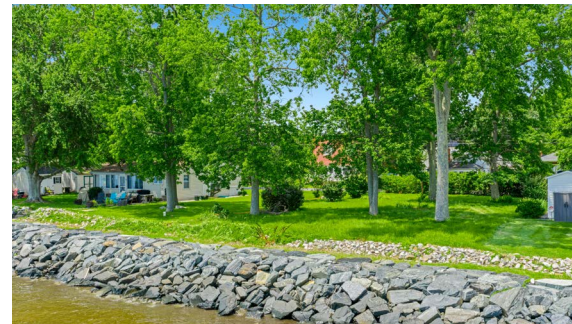
Nestled in the gated Columbia Beach community, 5235 Al Jones Drive offers a rare blend of serenity and accessibility. The drive in is lined with estate homes and waterfront charm. Whether it's weekends on the bay or peaceful year-round living, this is the ultimate Chesapeake retreat.



WHITEHALL BUILDING & CO.


Annapolis' leading waterfront luxury builder.

Known for exceptional craftsmanship, thoughtful layouts, and seamless client collaboration. A trusted partner for creating timeless coastal homes.



MEET LYNN PEAPER

“ Since 2015, Lynn has blended concierge-level service with data-driven expertise, guiding clients seamlessly through waterfront and new-construction transactions.

 homewithlynnpeaper | 410.991.0111 (M) | lynnpeaper@thepeapergroup.com